

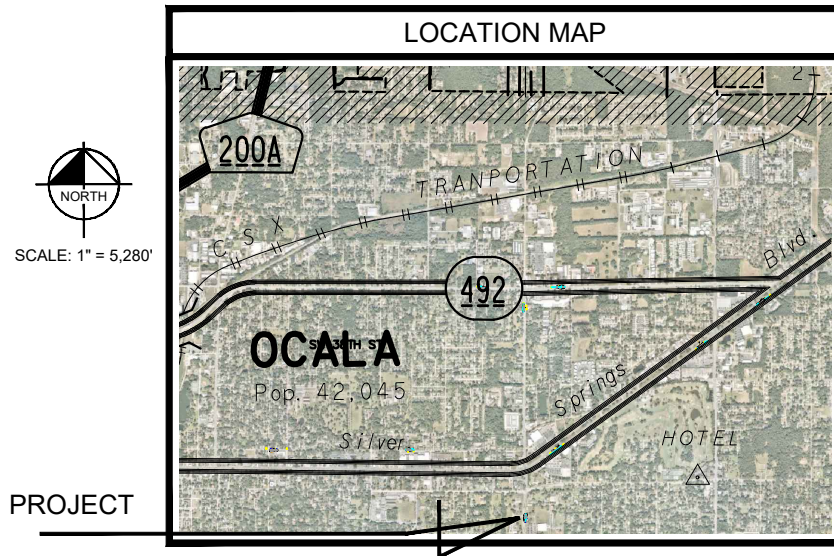
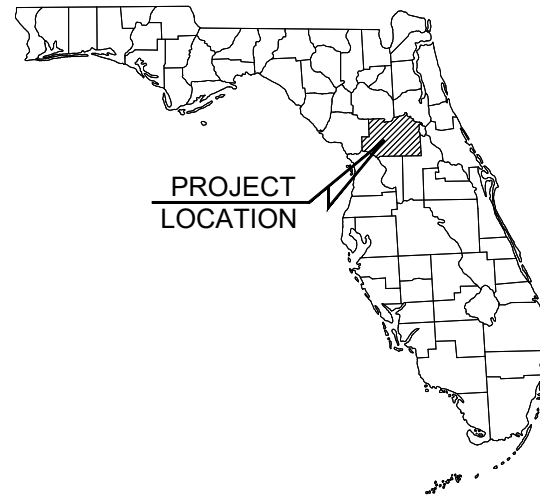
SITE PLAN FOR BUS STOP DESIGN SERVICES

CITY OF OCALA, FLORIDA

SECTION 15, TOWNSHIP 15 SOUTH, RANGE 22 EAST

BUS STOP NUMBER 8206
COORDINATES 29.1832 N -82.1033 E

DECEMBER 2022



DRAWING INDEX

SHEET	TITLE
C001	- COVER SHEET
C002	- GENERAL NOTES
C003	- MASTER SITE PLAN
C004	- #8206 SITE PLAN
C005	- CONSTRUCTION DETAILS

UTILITY PROVIDERS

ELECTRIC CITY OF OCALA ELECTRIC RANDY HAHN (352) 351-6615	TELEPHONE CENTURY LINK JOHN PALMONDON (352) 245-4444	GAS TECO BRUCE STOUT (407) 466-2662	FIBER CITY OF OCALA - FIBER O'SHANE PARKER (352) 401-6950
WATER & SEWER CITY OF OCALA - WATER & SEWER STACEY FERRANTE (352) 351-6775	COMMUNICATIONS COX COMMUNICATIONS PAUL CHRISTOPHER (352) 337-2009	FIBER UNITI KYLE HILL (850) 544-1400	

PROJECT OWNER AND CONSULTANTS

OWNER/APPLICANT: CITY OF OCALA	CIVIL ENGINEERING CONSULTANT: KIMLEY-HORN AND ASSOCIATES, INC. 1700 SE 17TH STREET, SUITE 400 OCALA, FLORIDA 34471 (352) 438-3000
SURVEYOR: ECHEZABAL & ASSOCIATES, INC. 108 COUNTRY CLUB DRIVE TAMPA, FLORIDA 33612 (352) 351-0091	

No.	REVISIONS	DATE	BY
1	NOT FOR CONSTRUCTION	-	-

Kimley-Horn
© 2022 KIMLEY-HORN AND ASSOCIATES, INC.
1700 SE 17TH STREET, SUITE 400, OCALA, FLORIDA 34471
PHONE: 352.438.3000
WWW.KIMLEY-HORN.COM REGISTRY NO. 35108

LICENSED PROFESSIONAL	MOHAMMED N. MURAD
FLORIDA LICENSE NUMBER	91243
CHECKED BY	MINI
DATE:	

KHA PROJECT
142371035
DATE
DECEMBER 2022
SCALE AS SHOWN
DESIGNED BY KHA
DRAWN BY KHA
CHECKED BY MINI

COVER SHEET

BUS STOP DESIGN
SERVICES
PREPARED FOR
CITY OF OCALA
FLORIDA

SHEET NUMBER
C001

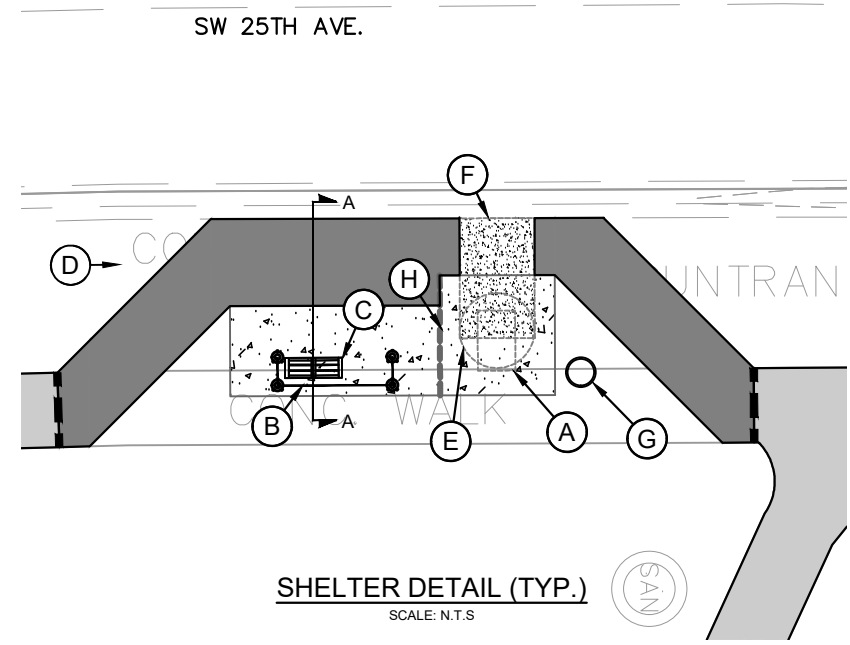
CALL 2 BUSINESS
DAYS BEFORE
YOU DIG
IT'S THE LAW!
DIAL 811

811
Know what's below.
Call before you dig.

SUNSHINE STATE ONE CALL OF FLORIDA, INC.

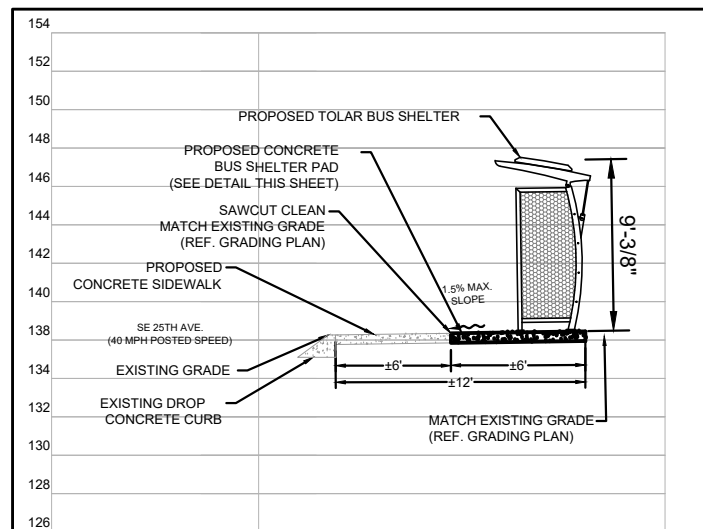
This document, together with the concepts and designs presented herein, is intended only for the specific purpose and client for which it was prepared. Reuse of and improper reliance on this document without written authorization and adaptation by Kimley-Horn and Associates, Inc. shall be without liability to Kimley-Horn and Associates, Inc.

This document, together with the concepts and designs presented herein, is intended only for the specific purpose and client for which it was prepared. Reuse of and improper reliance on this document without written authorization and adaptation by Kimley-Horn and Associates, Inc. shall be without liability to Kimley-Horn and Associates, Inc.



SHELTER DETAIL (TYP.)
SCALE: N.T.S.

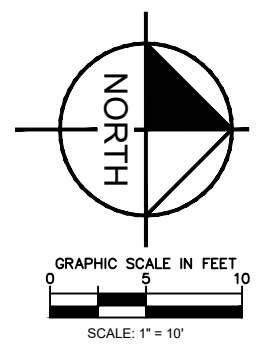
- NOTES:**
- (A) MINIMUM 30"x48" CLEAR ZONE FOR WHEELCHAIR RESTING AREA DIRECTLY AT END OF BENCH
 - (B) BUS SHELTER (PROVIDED BY OWNER)
 - (C) 44" BENCH INSTALLED 6" FROM GLASS (PROVIDED BY OWNER)
 - (D) VISUAL BUS STOP SIGN SHALL BE MOUNTED 84" ABOVE FINISHED GRADE (PROVIDED BY OWNER)
 - (E) 5' WHEELCHAIR TURN-AROUND
 - (F) MINIMUM 5'X8' CLEAR ZONE FOR WHEELCHAIR LIFT/RAMP DEPLOYMENT
 - (G) 22" DIA. X 28" HT. 30 GAL TRASH CAN.
 - (H) TYPE D JOINT PER FDOT INDEX #310 DIVIDING BUS SHELTER PAD IN EQUAL HALVES.



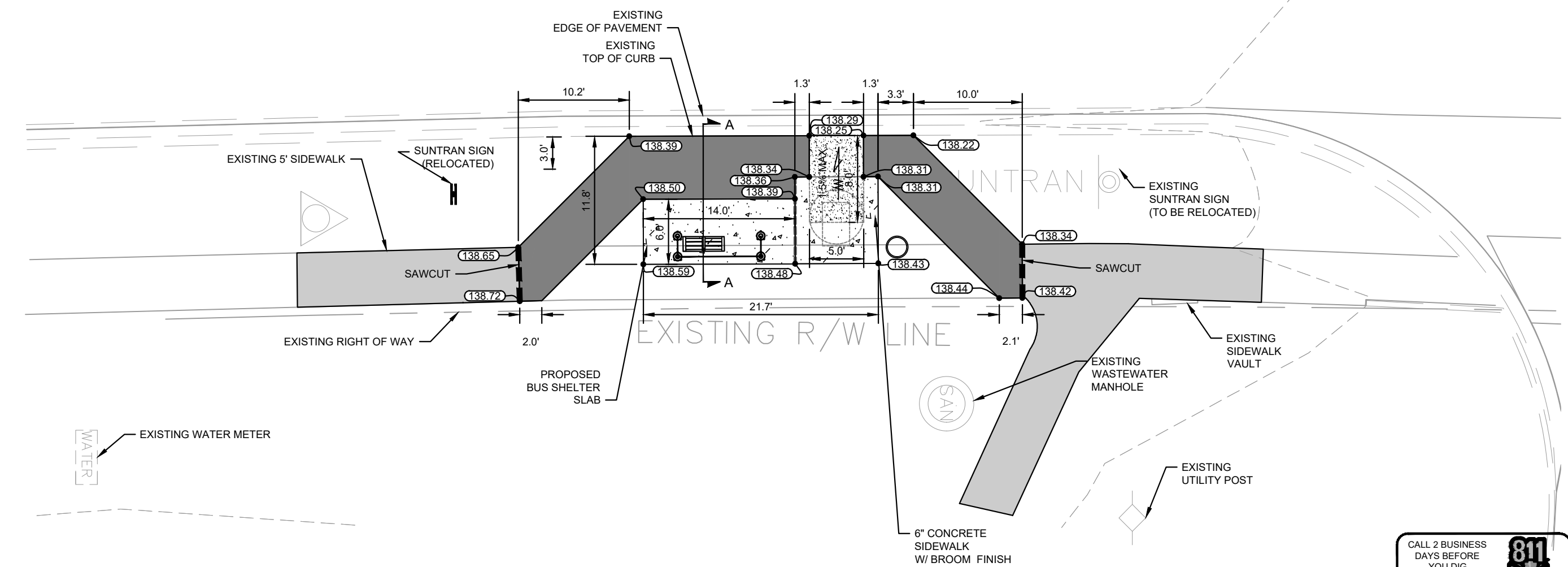
SECTION A-A
SCALE: N.T.S.

PAVEMENT LEGEND

- BUS SHELTER PAD (SEE DETAIL SHEET C005)
- BUS LANDING/LOADING PAD (SEE DETAIL SHEET C005)
- EXISTING SIDEWALK
- PROPOSED SIDEWALK (PER FDOT INDEX 522-001)
- SAWCUT, CLEAN AND MATCH EXISTING
- PROPOSED SPOT ELEVATION



- NOTES:**
- ALL WORK AND MATERIALS SHALL COMPLY WITH ALL CITY REGULATIONS AND CODES AND O.S.H.A. STANDARDS.
 - PRIOR TO CONSTRUCTION WITHIN ANY EXISTING PUBLIC RIGHT-OF-WAY, THE CONTRACTOR SHALL OBTAIN ALL NECESSARY PERMITS FROM THE AUTHORITY HAVING JURISDICTION.
 - CONTRACTOR SHALL REFER TO THE ARCHITECTURAL PLANS FOR EXACT LOCATIONS AND DIMENSIONS OF SLOPE PAVING, AND PRECISE BUILDING DIMENSIONS.
 - SITE BOUNDARY, TOPOGRAPHY, UTILITY AND ROAD INFORMATION PER SURVEY BY ECHEZABAL & ASSOCIATES, INC., DATED .
 - MAXIMUM RUNNING SLOPE ON SIDEWALKS SHALL NOT EXCEED 5% (1:20).
 - MAXIMUM CROSS SLOPE ON SIDEWALKS SHALL NOT EXCEED 2% (1:48).
 - MAXIMUM RUNNING SLOPE ON RAMPS SHALL NOT EXCEED 8.33% (1:12), FOR A MAXIMUM LENGTH OF 30'.
 - MAXIMUM SLOPE ON SHELTER CONCRETE SLAB IN ANY DIRECTION SHALL NOT EXCEED 2.0%.

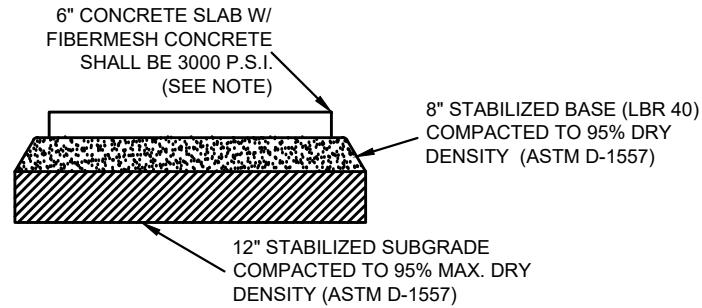


BUS STOP PLAN
#8206

CALL 2 BUSINESS DAYS BEFORE YOU DIG
 IT'S THE LAW!
 DIAL 811

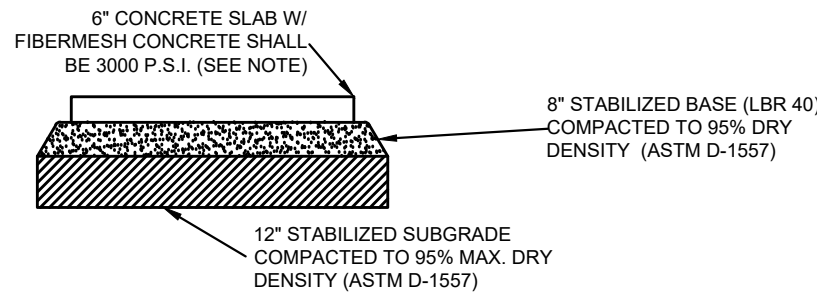
 Know what's below.
 Call before you dig.
 SUNSHINE STATE ONE CALL OF FLORIDA, INC.

#8206 SITE PLAN	KHA PROJECT 142371035	LICENSED PROFESSIONAL MOHAMMED N. MURAD	KIMLEY-HORN AND ASSOCIATES, INC. 1700 SE 17TH STREET, SUITE 200, OCALA, FLORIDA 34471 PHONE: 352-438-3000 WWW.KIMLEY-HORN.COM REGISTRY NO. 35108
	DATE DECEMBER 2022	FLORIDA LICENSE NUMBER 91243	
BUS STOP DESIGN SERVICES PREPARED FOR CITY OF OCALA FLORIDA	SCALE AS SHOWN	DESIGNED BY KHA	NOT FOR CONSTRUCTION
	DRAWN BY KHA	CHECKED BY MNM	
SHEET NUMBER C004	DATE	REVISIONS	BY



CONCRETE BOARDING AND ALIGHTING PAD DETAIL
N.T.S.

NOTE:
 FIBERMESH CONCRETE SHALL INCLUDE SYNTHETIC FIBERS AT THE RATE OF THREE (3) POUNDS PER CUBIC YARD FOR THE 3000 PSI MIX, BASED ON A FIBER'S MODULUS OF ELASTICITY OF 1378 KSI. THIS RATE SHALL BE ADJUSTED UP OR DOWN PROPORTIONATE TO THE MODULUS OF ELASTICITY OF THE SELECTED FIBER. SYNTHETIC STRUCTURAL FIBERS SHALL MEET THE REQUIREMENTS OF ASTM C 1116, PARAGRAPH 4.1.3, TYPE III; SHALL BE MONOFILAMENT, MADE OF POLYPROPYLENE OR BLENDED POLYPROPYLENE/POLYETHYLENE; SHALL BE A MINIMUM OF ONE AND ONE-HALF INCHES (1.5") IN LENGTH; AND SHALL HAVE AN ASPECT RATIO (LENGTH/FIBER DIAMETER) BETWEEN 80 AND 100.



CONCRETE BUS SHELTER PAD DETAIL
N.T.S.

NOTE:
 FIBERMESH CONCRETE SHALL INCLUDE SYNTHETIC FIBERS AT THE RATE OF THREE (3) POUNDS PER CUBIC YARD FOR THE 3000 PSI MIX, BASED ON A FIBER'S MODULUS OF ELASTICITY OF 1378 KSI. THIS RATE SHALL BE ADJUSTED UP OR DOWN PROPORTIONATE TO THE MODULUS OF ELASTICITY OF THE SELECTED FIBER. SYNTHETIC STRUCTURAL FIBERS SHALL MEET THE REQUIREMENTS OF ASTM C 1116, PARAGRAPH 4.1.3, TYPE III; SHALL BE MONOFILAMENT, MADE OF POLYPROPYLENE OR BLENDED POLYPROPYLENE/POLYETHYLENE; SHALL BE A MINIMUM OF ONE AND ONE-HALF INCHES (1.5") IN LENGTH; AND SHALL HAVE AN ASPECT RATIO (LENGTH/FIBER DIAMETER) BETWEEN 80 AND 100.

CALL 2 BUSINESS DAYS BEFORE YOU DIG
 IT'S THE LAW!
 DIAL 811

 Know what's below.
 Call before you dig.
 SUNSHINE STATE ONE CALL OF FLORIDA, INC.

BUS STOP DESIGN SERVICES	CONSTRUCTION DETAILS	PREPARED FOR CITY OF OCALA	FLORIDA	SHEET NUMBER	C005
				CITY OF OCALA	FLORIDA
KHA PROJECT 142371035	LICENSED PROFESSIONAL MOHAMMED N. MURAD			No.	BY
DATE DECEMBER 2022	MOHAMMED N. MURAD			DATE	DATE
SCALE AS SHOWN	FLORIDA LICENSE NUMBER 91243			REVISIONS	REVISIONS
DESIGNED BY KHA				NOT FOR CONSTRUCTION	NOT FOR CONSTRUCTION
DRAWN BY KHA					
CHECKED BY MNM					
DATE					